

ONE AMERICA WORKS  
DALLAS

GROWING  
COMPANIES  
CHOOSE  
DALLAS



-  CISCO
-  UBER
-  AMAZON
-  MICROSOFT
-  INTUIT
-  RAYTHEON
-  LOCKHEED MARTIN
-  AMERICAN AIRLINES GROUP INC

TOP COMPANIES  
HAVE THOUSANDS OF  
EMPLOYEES IN DALLAS

- TELECOM CORRIDOR  
HOSTS OVER 5700 COMPANIES
- TOP TEN DIGITAL  
INFRASTRUCTURE GLOBALLY
- 23 FORTUNE 500 COMPANIES  
IN DALLAS-FORTH WORTH
- 4TH LARGEST METRO AREA  
WITH 7.5 MILLION PEOPLE
- 5TH MOST DIVERSE CITY  
IN THE US

“THE FAVORABLE BUSINESS CLIMATE  
AND AVAILABLE TECH TALENT  
IN DALLAS HAS MADE IT ONE OF THE  
TOP STARTUP MARKETS IN THE U.S.”

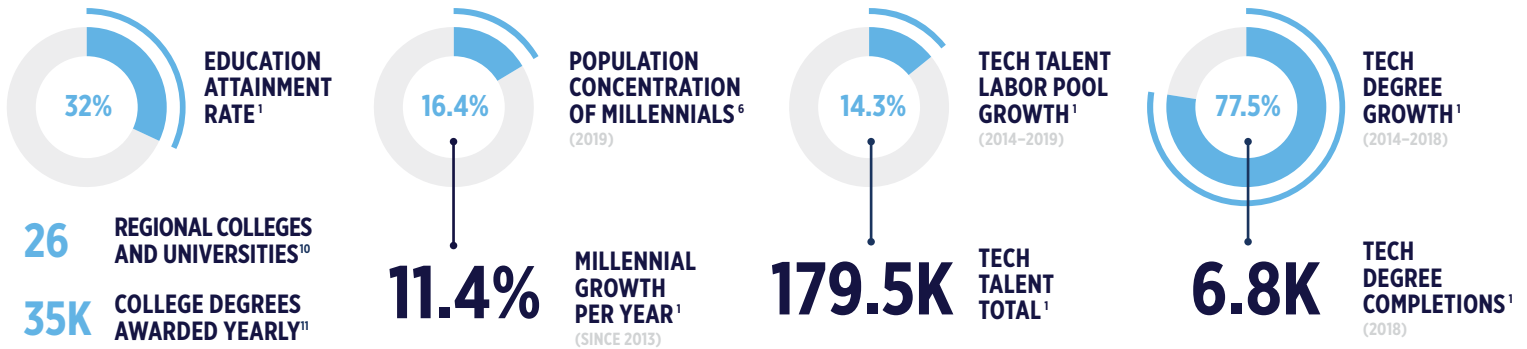
—CBRE

# :TALENT

5th Largest Tech Labor Pool in North America

—CBRE

Dallas ranks second in educational attainment among the Texas metros, with 36.5% holding a bachelor's degree or higher. A well-educated workforce and rapid growth continue to attract businesses to the area.<sup>12</sup>



DALLAS HAS SOLIDIFIED ITS PLACE IN THE COUNTRY AS A TOP FIVE TECH LABOR MARKET<sup>1</sup>

15 MAJOR UNIVERSITIES, 400K+ STUDENTS ENROLLED<sup>1</sup>

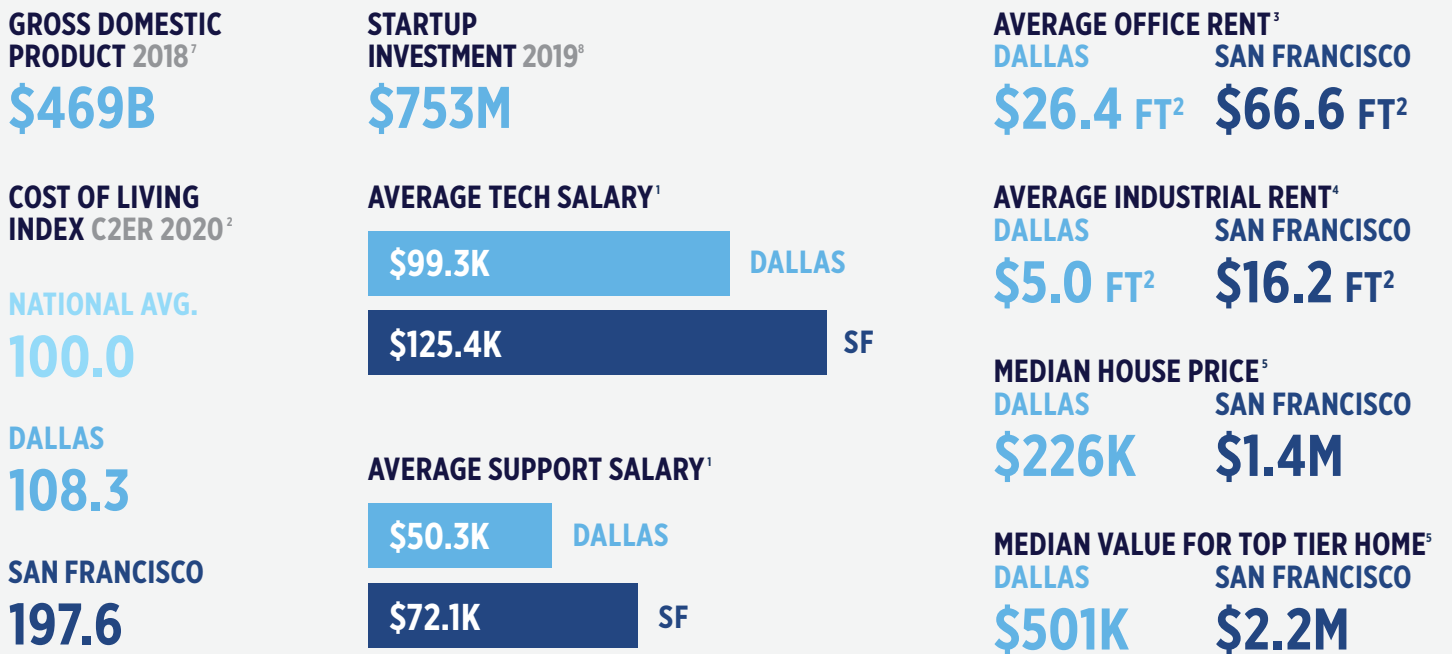
6,503 TECH DEGREES OBTAINED IN 2017 AT LOCAL UNIVERSITIES<sup>1</sup>

# :COST

#9 Best Performing City

—Milken Institute

Dallas is ranked highly for key economic measures, but its cost of living and working is reasonable by coastal tech hub standards.



DALLAS AREA HOUSING CONSISTENTLY ONE OF THE MOST AFFORDABLE METRO MARKETS IN THE US

13.9% RENT-TO-TECH WAGE RATIO, THE MOST RENT-FRIENDLY LARGE TECH TALENT LABOR POOL MARKET

PER CAPITA INCOME & MEDIAN HOUSEHOLD INCOME HIGHER THAN NATIONAL FIGURES<sup>12</sup>

# QUALITY OF LIFE

# OUTDOORS



High ratings in startups, environmental quality and leisure & culture  
—Teleport

# CULTURE SPORTS



# CONNECTION

HQ for both American Airlines and Southwest Airlines—DFW is one of the most globally connected airports in the world.

## NONSTOP DESTINATIONS<sup>3</sup>

See full list at [nsflight.com](http://nsflight.com)

ALBUQUERQUE	1 hr 20 min
ASHEVILLE	1 hr 50 min
ATLANTA	1 hr 40 min
AUSTIN	30 min
BALTIMORE	2 hrs 35 min
BOISE	2 hrs 45 min
BOSTON	3 hrs 15 min
BOZEMAN	2 hrs 40 min
BUFFALO	2 hrs 30 min
CHARLESTON	2 hrs 5 min
CHARLOTTE	2 hrs
CHICAGO	1 hr 50 min
CINCINNATI	1 hr 50 min
CLEVELAND	2 hrs 10 min
COL. SPRINGS	1 hr 25 min
COLUMBUS	2 hrs
DENVER	1 hr 40 min
DES MOINES	1 hr 30 min
DETROIT	2 hrs 10 min

EL PASO	1 hr 15 min
FT. LAUDERDALE	2 hrs 30 min
FRESNO	2 hrs 55 min
GRAND RAPIDS	2 hrs
HOUSTON	45 min
INDIANAPOLIS	1 hr 40 min
KANSAS CITY	1 hr 10 min
KNOXVILLE	1 hr 40 min
LAS VEGAS	2 hrs 20 min
LOS ANGELES	2 hrs 40 min
LOUISVILLE	1 hr 40 min
MEMPHIS	1 hr 5 min
MIAMI	2 hrs 25 min
MILWAUKEE	2 hrs
MINNEAPOLIS	2 hrs
MOBILE	1 hr 15 min
NASHVILLE	1 hr 25 min
NEW ORLEANS	1 hr 5 min
NEW YORK	3 hrs

NEWARK	2 hrs 55 min
OMAHA	1 hr 25 min
ORLANDO	2 hrs 10 min
PENSACOLA	1 hr 25 min
PHILADELPHIA	2 hrs 45 min
PHOENIX	2 hrs
PITTSBURGH	2 hrs 15 min
PORTLAND	3 hrs 30 min
RALEIGH/DURHAM	2 hrs 15 min
SACRAMENTO	3 hrs 5 min
SALT LAKE CITY	2 hrs 15 min
SAN ANTONIO	40 min
SAN DIEGO	2 hrs 30 min
SAN FRANCISCO	3 hrs 10 min

SAN JOSE	3 hrs 5 min
SANTA FE	1 hr 20 min
SEATTLE	3 hrs 40 min
ST. LOUIS	1 hr 20 min
TAMPA	2 hrs
TUCSON	1 hr 45 min
TULSA	45 min
WASHINGTON	2 hrs 30 min

**+ OVER 120 DOMESTIC AND 50 INTERNATIONAL FLIGHTS NOT SHOWN**

**DFW IS NOW THE THIRD-MOST CONNECTED AIRPORT IN THE UNITED STATES<sup>3</sup>**

**DFW AIRPORT IS THE 4TH BUSIEST IN THE US, AND LARGER THAN THE ISLAND OF MANHATTAN**

**DALLAS IS HQ TO BOTH AMERICAN AIRLINES AND SOUTHWEST AIRLINES**

# :GROWING COMPANIES CHOOSE DALLAS

Dallas's economy is built on a diverse mix of industries and strategic focus. **Recent investment in the region includes:**

## Uber

**450K ft<sup>2</sup>**  
450K ft<sup>2</sup> space  
and 3000 jobs

## MCKESSON

**HQ TO DALLAS**  
Moved HQ from CA,  
\$157M and 1,000 jobs

## charles SCHWAB

**HQ TO DALLAS**  
Moved HQ from SF +  
3,000 jobs

## J.P.Morgan

**4K JOBS**  
540K & 4000 jobs  
at Dallas location

## Aeromax

**HQ TO DALLAS**  
Moved HQ from  
California

## amazon

**1.5K TECH JOBS**  
1500 tech jobs  
at Dallas location

## Infosys

**500 JOBS**  
500 jobs  
at Dallas location

## paycom

**1K JOBS**  
1000 Jobs  
at Dallas location

## PELOTON

**400 JOBS**  
400 jobs  
at Dallas location

## AMN Healthcare

**650 JOBS**  
650 jobs  
at Dallas location



**150 JOBS**  
150 jobs  
at Dallas location

## Raytheon

**\$5B + 500 JOBS**  
\$5B investment and  
500 engineering jobs

**DALLAS WAS #1 METRO  
FOR JOB GROWTH IN  
2018 AND 2019**

**TEXAS NAMED TOP  
STATE FOR BUSINESS  
15 YEARS IN A ROW**

**INC 500 FASTEST GROWING  
PRIVATE COMPANIES LISTS  
17 DALLAS COMPANIES**

# :STRATEGIC SECTORS<sup>12</sup>



## HIGH TECH

- The first microchip was invented in Dallas at Texas Instruments
- Today high tech manufacturing has a very large base in Dallas.
- The DFW tech industry encompasses four general categories: manufacturing, information services, professional technical services, and bio-life sciences.



## IT & TELECOM

- Dallas is home to major technology companies, including Texas Instruments and AT&T
- The information technology and telecommunications cluster employed about 8 percent of the metro's workforce in 2017, growing 16 percent from 2010-2017



## BUSINESS AND FINANCIAL SERVICES

- Business and financial services is the largest industry cluster in Dallas, employing around 14% of the workforce in 2017
- Some of Dallas' largest employers are banking companies, such as JPMorgan Chase & Co. and Bank of America



## DEFENSE AND SECURITY

- The Defense and Security sector has gained standing in Dallas, employing 5 percent of the workforce
- Dallas' neighbor, the Fort Worth-Arlington metropolitan division, also has dominant defense and energy clusters



## TRANSPORTATION AND LOGISTICS

- Expected to see continued expansion following an earlier national consolidation that increased the sectors' local concentration
- Fort Worth-Arlington serves as a logistics and distribution hub with activity spilling into Dallas, where transportation and logistics was the fastest-growing cluster.

## SOURCES

<sup>1</sup> 2020 Scoring Tech Talent, cbre.us; <sup>2</sup> CZER, col.org; <sup>3</sup> Cushman and Wakefield Dallas Office MarketBeat Report Q2 2020; <sup>4</sup> Cushman and Wakefield Dallas Industrial MarketBeat Report Q2 2020; <sup>5</sup> Zillow.com; <sup>6</sup> Statisticalatlas.com; <sup>7</sup> Statista.com; <sup>8</sup> The Business Journals, bizjournals.com; <sup>9</sup> nsflights.com; <sup>10</sup> College Simply, collegesimply.com; <sup>11</sup> Destination DFW, destinationdfw.com; <sup>12</sup> Federal Reserve Bank of Dallas, dallasfed.org;

**ONE AMERICA WORKS**  
oneamericaworks.org

One America Works helps connect innovative companies with cities that can best support their growth. Tell us about your company at [dallas@oneamericaworks.org](mailto:dallas@oneamericaworks.org).