

ONE AMERICA WORKS
PITTSBURGH

THE FUTURE
LIVES HERE



-  **GOOGLE**
-  **AMAZON**
-  **FACEBOOK**
-  **MICROSOFT**
-  **AURORA**
-  **ARGO AI**

**LEADING TECH COMPANIES
ARE GROWING IN PITTSBURGH**

- **TOP COMPUTER SCIENCE, AI, ML, ROBOTICS PROGRAMS (CARNEGIE MELLON/ UNIVERSITY OF PITTSBURGH)**
- **TOP RESEARCH INVESTMENT OVER \$3 BILLION IN R&D ANNUALLY**
- **TOP-RANKED HOSPITALS AND A LEADING HEALTH-CARE ECOSYSTEM**

**“ONE OF THE MOST
POWERFUL INNOVATION
ECOSYSTEMS IN THE WORLD.”**

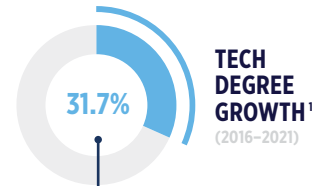
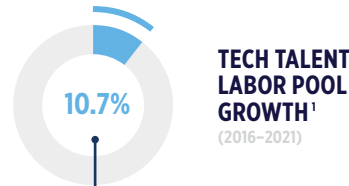
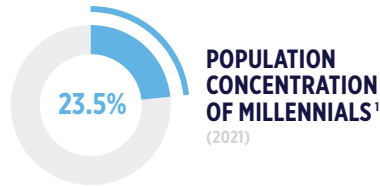
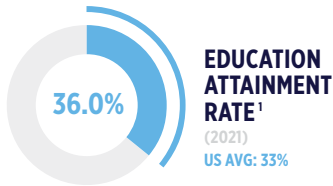
—BRUCE KATZ, BROOKINGS INSTITUTION

:TALENT

#1 Metro for College Graduates

—Trulia + LinkedIn

Pittsburgh's pool of young, educated professionals is growing. **The metro area has the second-most computer science graduates in the country.²**



80+ POST-SECONDARY INSTITUTIONS¹⁰
45K+ COLLEGE DEGREES AWARDED YEARLY¹¹

44.4K TECH TALENT TOTAL¹

5.4K TECH DEGREE COMPLETIONS¹
(2021)

45,000+ STUDENTS GRADUATE FROM 60+ REGIONAL UNIVERSITIES EVERY YEAR.¹¹

CARNEGIE MELLON: HOME TO THE #1 COMPUTER SCIENCE PROGRAM.¹¹

THE MOST DIVERSE TECH TALENT MARKET, ACCORDING TO CBRE.¹²

:COST

#1 most affordable (housing) market both in the U.S. and internationally

—SF Chronicle

Pittsburgh is world-class and affordable.

GROSS DOMESTIC PRODUCT 2020⁷
\$153B

STARTUP INVESTMENT 2021⁸
\$3.59B

R&D INVESTMENT¹³ UNIV, CORP, & GOV
\$3B+

AVERAGE CLASS A OFFICE RENT³ PITTSBURGH SAN FRANCISCO
\$28.9 FT² \$83.0 FT²

COST OF LIVING INDEX C2ER 2022²

NATIONAL AVG.
100.0

PITTSBURGH
104.0

SAN FRANCISCO
194.0

AVERAGE TECH SALARY¹

\$88.7K PITTSBURGH

\$144.4K SF

AVERAGE SUPPORT SALARY¹

\$46.9K PITTSBURGH

\$77.7K SF

AVERAGE INDUSTRIAL RENT⁴ PITTSBURGH SAN FRANCISCO
\$7.2 FT² \$19.4 FT²

MEDIAN HOUSE PRICE APR 2022⁵ PITTSBURGH SAN FRANCISCO
\$232K \$1.5M

MEDIAN VALUE FOR TOP TIER HOME⁶ PITTSBURGH SAN FRANCISCO
\$403K \$2.4M

MOST AFFORDABLE HOUSING IN THE US, BASED ON PRICE-TO-INCOME RATIO.¹⁴

TECH HAS A \$12.2B ANNUAL ECONOMIC IMPACT ON THE PITTSBURGH REGION.¹⁵

RANKED 23RD GLOBALLY AMONG EMERGING STARTUP ECOSYSTEMS.¹⁶

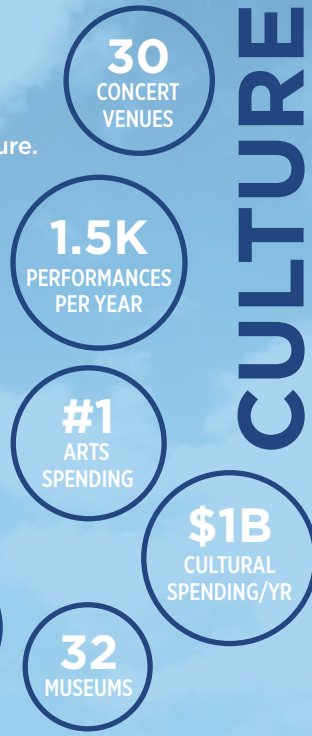
QUALITY OF LIFE

Pittsburgh has a legacy of investment in parks, trails, libraries, museums, venues, programs and infrastructure.

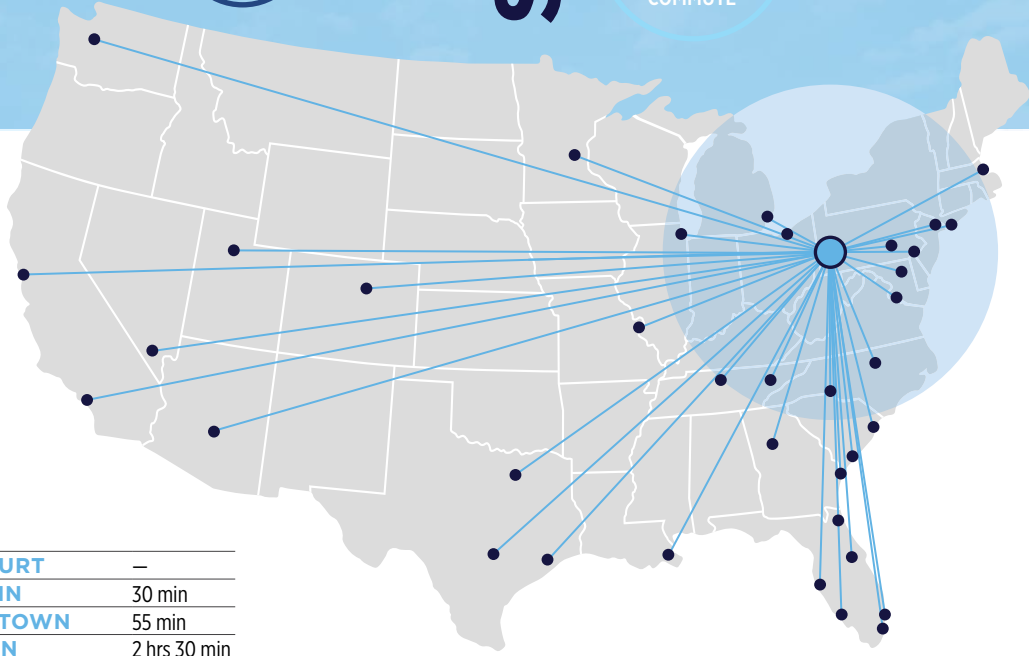
OUTDOORS



CULTURE



& MORE



PIT: 2017 Airport of the Year

—Air Transport World

Accessible and strategic with a strong physical infrastructure: Pittsburgh is a smart destination for businesses.

NONSTOP DESTINATIONS⁹

See full list at nsflight.com

ALTOONA	40 min
ATLANTA	1 hr 15 min
AUSTIN	2 hrs 30 min
BALTIMORE	40 min
BOSTON	1 hr 13 min
BRADFORD	45 min
CANCUN	—
CHARLESTON	1 hr 15 min
CHARLOTTE	1 hr
CHICAGO	1 hr 5 min
CLEVELAND	30 min
DALLAS	2 hrs 25 min
DALLAS/FORT WORTH	2 hrs 25 min
DENVER	3 hrs
DETROIT	40 min
DUBOIS	40 min
FT. LAUDERDALE	2 hrs 15 min
FORT MYERS	2 hrs 10 min

FRANKFURT	—
FRANKLIN	30 min
HAGERSTOWN	55 min
HOUSTON	2 hrs 30 min
JACKSONVILLE	1 hr 35 min
JOHNSTOWN	25 min
KNOXVILLE	55 min
LANCASTER	1 hr 10 min
LAS VEGAS	4 hrs 10 min
LONDON	—
LOS ANGELES	4 hrs 40 min
MIAMI	2 hrs 20 min
MINNEAPOLIS	1 hr 50 min
MONTREAL	—
MORGANTOWN	30 min
MYRTLE BEACH	1 hr 5 min
NASHVILLE	1 hr 10 min
NEW ORLEANS	1 hr 55 min
NEW YORK	1 hr 5 min

NEWARK	1 hr
ORLANDO	1 hr 50 min
PHILADELPHIA	50 min
PHOENIX	4 hrs
PUNTA CANA	—
PUNTA GORDA	2 hrs
RALEIGH/DURHAM	55 min
SALT LAKE CITY	3 hrs 45 min
SAN FRANCISCO	4 hrs 50 min
SANFORD	1 hr 50 min
SARASOTA	2 hrs
SAVANNAH	1 hr 20 min
SEATTLE	4 hrs 50 min
ST. LOUIS	1 hr 20 min

ST. PETERSBURG	2 hrs
TAMPA	2 hrs
TORONTO	—
VALPARAISO	1 hr 40 min
WASHINGTON	40 min
WEST PALM BEACH	3 hrs 15 min
WILLIAMSPORT	40 min

+ MORE DOMESTIC AND INTERNATIONAL FLIGHTS NOT SHOWN

PITTSBURGH IS WITHIN 500 MI. OF 48% OF U.S. BUSINESSES.¹¹

74 DIRECT FLIGHTS WITH MORE ADDED EVERY YEAR.

1.5 HOURS OR LESS TO N.Y., CHICAGO, D.C. AND BOSTON.

:GROWING COMPANIES CHOOSE PITTSBURGH

Pittsburgh's economy is built on a diverse mix of industries and strategic focus. [Recent investment in the region includes:](#)



750+ employees and 320K ft² engineering office in Larimer



125 employee expansion for web services, machine translation and Alexa



Expanded into 20K ft² space in the Strip District



Acquired Avere Systems focusing on cloud-based high-performance computing



Acquired Uber ATG in December 2020, pushing their valuation to \$10B



Expanding into a new, 122K ft², five-story facility on North Shore, growing to 850 employees



Regional HQ for 1,250 employees in East Liberty for its virtual reality research center



Expanded Advanced Technology Center in the Strip District



Motional, Aptiv/Hyundai joint venture, valued at \$4 billion, 95 jobs



Invested in Pittsburgh startup Argo AI for autonomous vehicle R&D

\$10.5 BILLION INVESTED IN PITTSBURGH TECH OVER LAST 10 YEARS.¹⁷

\$7.2 BILLION TOTAL INBOUND M&A OF PITTSBURGH COMPANIES 2011-2022.¹⁸

MORE THAN 350 OF THE WORLD'S MOST INNOVATIVE COMPANIES HAVE PARTNERED WITH CARNEGIE MELLON.¹⁸

:STRATEGIC SECTORS



ADVANCED MANUFACTURING

- Additive manufacturing
- Electrical equipment
- Industrial machinery
- Precision machining
- Specialty chemistry
- Specialty metals



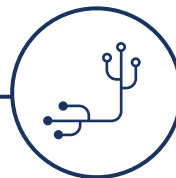
ENERGY AND CLEANTECH

- \$1B in energy-related R&D funding
- National Energy Technology Lab
- Scott Institute for Energy Innovation



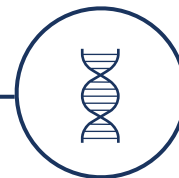
FINANCIAL & BUSINESS SERVICES

- Corporate support
- Legal services
- Mortgage servicing
- Transaction processing
- Employing 250,000 people at approximately 16,000 firms



INFORMATION TECHNOLOGY

- Robotics
- Artificial intelligence
- Cybersecurity
- FinTech
- Machine learning
- Big data



HEALTH CARE & LIFE SCIENCES

- Medical devices
- Regenerative medicine
- Tissue engineering
- Diagnostics
- Transplants
- More than \$950M spent on academic Life Sciences R&D annually

SOURCES

¹ 2021 Scoring Tech Talent, [cbre.us](#); ² C2ER, [coli.org](#), Q2 2022; ³ Colliers; ⁴ Statista, [statista.com](#); ⁵ Redfin; ⁶ Zillow.com; ⁷ St Louis Fed, [fred.stlouisfed.org/series/NGMP38300](#); ⁸ EY + IW Investment in Pittsburgh's Technology Sector Report, [pub.ey.com/public/2022/2201/2201-3958601/pittsburgh-technology2021/index.html](#); includes IPO/SPACs; ⁹ nsflights.com; ¹⁰ myCollegeOptions, [mycollegeoptions.org](#); ¹¹ ACCD Market Research 2021; ¹² CBRE, [cbre.com/insights/reports/scoring-tech-talent-in-north-america-2021#market-diversity](#); ¹³ ACCD Market Research, 2018; ¹⁴ SF Chronicle, [sfchronicle.com/bayarea/article/real-estate-affordable-housing-markets-17148926.php](#); ¹⁵ CompTIA; ¹⁶ Startup Genome; ¹⁷ E&Y/Technical.ly, [technical.ly/startups/pittsburgh-tech-investment-report-10-billion-years](#); ¹⁸ Allegheny Conference;