

# ONE AMERICA WORKS PITTSBURGH

# WORLD-CLASS COMPANIES CHOOSE PITTSBURGH

● **TOP COMPANIES HAVE THOUSANDS OF EMPLOYEES IN PITTSBURGH**

- **TOP COMPUTER SCIENCE PROGRAMS (CARNEGIE MELLON/UNIV. OF PITT)**
- **TOP RESEARCH INVESTMENT: OVER \$2 BILLION IN R&D ANNUALLY<sup>2</sup>**
- **TOP-RANKED HOSPITALS AND A LEADING HEALTH-CARE ECOSYSTEM**

 **GOOGLE**

 **AMAZON**

 **FACEBOOK**

 **MICROSOFT**

 **UBER**

 **ARGO AI**

**“ONE OF THE MOST  
POWERFUL INNOVATION  
ECOSYSTEMS IN THE WORLD.”**

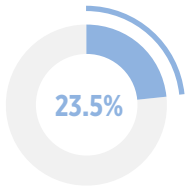
—BRUCE KATZ, BROOKINGS INSTITUTION

# :TOP-TIER TALENT

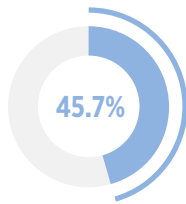
#1 Metro for College Graduates

—Trulia + LinkedIn

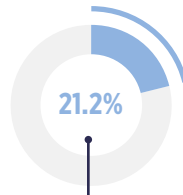
Pittsburgh's pool of young, educated professionals is growing. **Our metro area has the second-most computer science graduates<sup>2</sup>** and the average tech salary is 21% less than the national average.



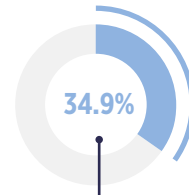
**POPULATION CONCENTRATION OF MILLENNIALS<sup>1</sup>**  
(2016)



**EDUCATION ATTAINMENT RATE<sup>1</sup>**



**TECH TALENT LABOR POOL GROWTH<sup>1</sup>**  
(2012-2017)



**TECH DEGREE GROWTH<sup>1</sup>**  
(2011-2016)

**\$83.1K** AVERAGE TECH TALENT SALARY<sup>1</sup>

**\$51.6K** AVERAGE SUPPORT (NON-TECH) SALARY<sup>1</sup>

**44.3K** TECH TALENT TOTAL<sup>1</sup>

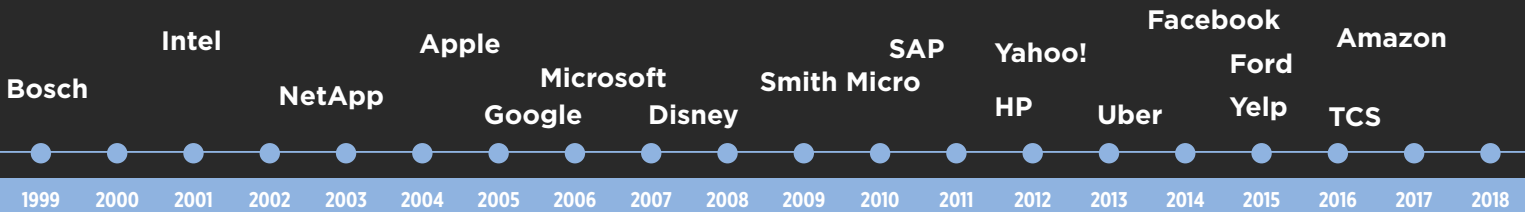
**4.4K** TECH DEGREE COMPLETIONS<sup>1</sup>  
(2016)

**45,000+ STUDENTS GRADUATE FROM 60+ REGIONAL UNIVERSITIES EVERY YEAR.<sup>2</sup>**

**CARNEGIE MELLON: HOME TO THE #1 COMPUTER SCIENCE PROGRAM.<sup>2</sup>**

**4,400 ANNUAL TECH GRADUATES, MANY OF WHOM STAY TO ACCESS EMPLOYMENT OPPORTUNITIES AND QUALITY OF LIFE.**

# :GROWING COMPANIES CHOOSE PITTSBURGH



RECENT INVESTMENT



**280K ft<sup>2</sup>**  
500+ employees and 280K ft<sup>2</sup> engineering office in Larimer



**140K ft<sup>2</sup>**  
Expansion for web services, machine translation and Alexa



**20K ft<sup>2</sup>**  
Expanded into 20K ft<sup>2</sup> space in the Strip District



**20K ft<sup>2</sup>**  
For its Oculus virtual reality research center



**24K ft<sup>2</sup> + 100 JOBS**  
Acquired Avere Systems focusing on cloud-based high-performance computing



**ATC**  
R&D hub for driverless car technology—partnered with Carnegie Mellon



**\$72M + 242 JOBS**  
Expanding into a new, 122K ft<sup>2</sup>, five-story facility on North Shore



**200K ft<sup>2</sup> HQ**  
Regional HQ for 1,250 employees in East Liberty



**52K ft<sup>2</sup>**  
Expanded Advanced Technology Center in the Strip District



**\$32M + 50 JOBS**  
New Center for Additive Technology Advancement for development & training



**\$1B**  
Invested in Pittsburgh startup Argo AI for autonomous vehicle R&D



**600 JOBS**  
600 permanent jobs with completed petrochemical complex

**PITTSBURGH IS HEADQUARTERS TO 13 FORTUNE 1000 COMPANIES.**

**\$8.7 BILLION TOTAL INBOUND M&A OF PITTSBURGH COMPANIES 2008-2017.**

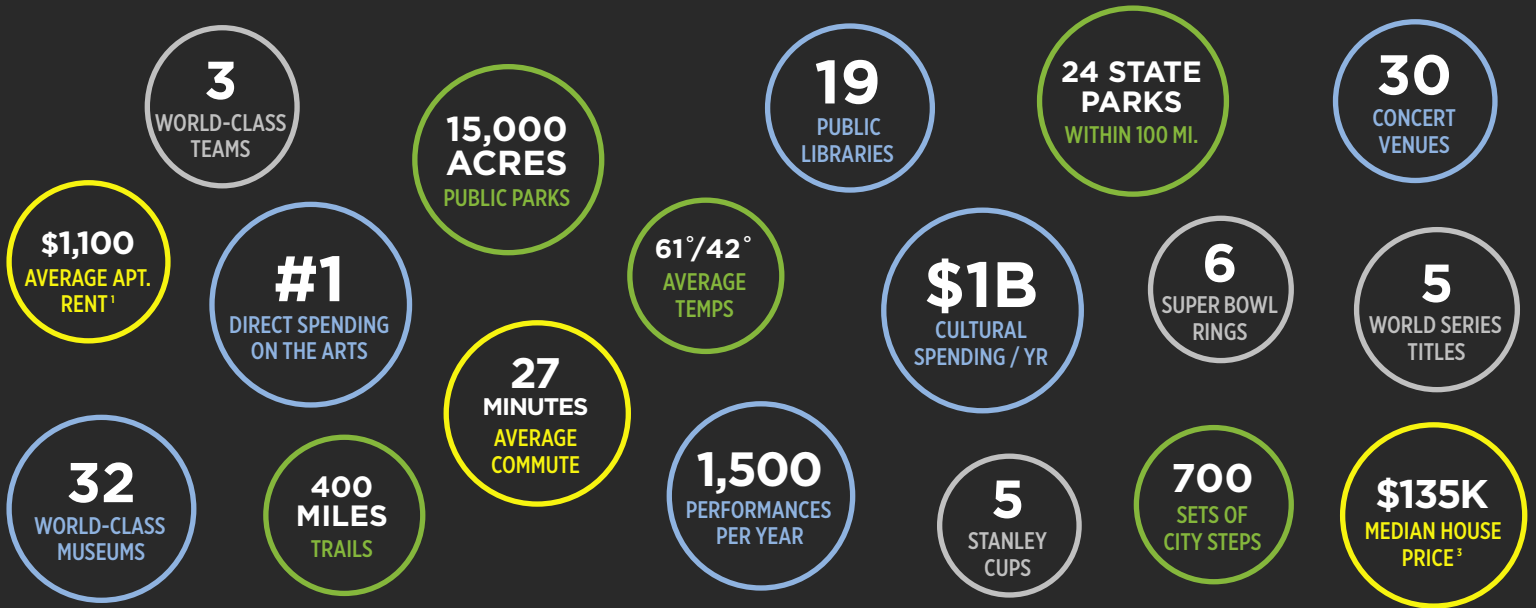
**MORE THAN 350 OF THE WORLD'S MOST INNOVATIVE COMPANIES HAVE PARTNERED WITH CARNEGIE MELLON.**

# QUALITY OF LIFE

Pittsburgh has a legacy of investment in parks, trails, libraries, museums, venues, programs and infrastructure.

- OUTDOORS
- SPORTS
- CULTURE
- OTHER

#2 Most Livable City  
—TribLIVE



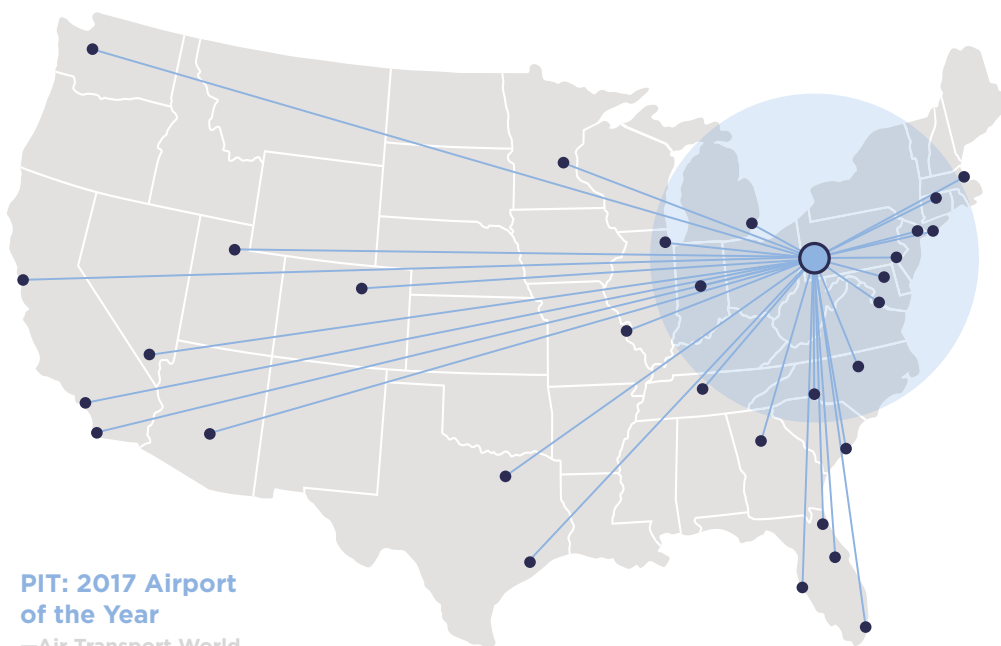
# CONNECTION

Accessible and strategic with a strong physical infrastructure: Pittsburgh is a smart destination for businesses.

**PITTSBURGH IS WITHIN 500 MI. OF 48% OF U.S. BUSINESSES.<sup>2</sup>**

**74 DIRECT FLIGHTS WITH MORE ADDED EVERY YEAR.**

**1.5 HOURS OR LESS TO N.Y., CHICAGO, D.C. AND BOSTON.**



**PIT: 2017 Airport of the Year**  
—Air Transport World

Nonstop Destination	Duration
ATLANTA	1 hr 40 min
BALTIMORE	1 hr
BOSTON	1 hr 30 min
CHARLESTON	1 hr 30 min
CHARLOTTE	1 hr 30 min
CHICAGO	1 hr 30 min
DALLAS	3 hrs
DENVER	3 hrs 30 min
DETROIT	1 hr 15 min
HOUSTON	3 hrs
LAS VEGAS	4 hrs 30 min
LOS ANGELES	5 hrs 15 min
MIAMI	2 hrs 45 min
MINNEAPOLIS	2 hrs 15 min
NASHVILLE	1 hr 30 min
NEW YORK	1 hr 30 min
NEWARK	1 hr 30 min
ORLANDO	2 hrs 15 min
PHILADELPHIA	1 hr 15 min
PHOENIX	4 hrs 30 min
RALEIGH	1 hr 30 min
SAN FRANCISCO	5 hrs 30 min
SEATTLE	5 hrs 30 min
ST. LOUIS	1 hr 40 min
TORONTO	1 hr
WASHINGTON D.C.	1 hr

# :PITTSBURGH IS WORLD-CLASS

REGIONAL  
UNIVERSITIES<sup>2</sup>  
**60+**

COLLEGE DEGREES  
AWARDED ANNUALLY<sup>2</sup>  
**45,000+**

STARTUP  
INVESTMENT 2017  
**\$687M**

GROSS DOMESTIC  
PRODUCT 2017  
**\$139B**

R&D INVESTMENT  
UNIVERSITY<sup>2</sup> CORPORATE & GOV<sup>2</sup>  
**\$1B+** **\$2B+**

## ...AND AFFORDABLE

One of the Most Affordable Places to Live in the U.S.  
—U.S. News & World Report

Averages 2Q 2018	Pittsburgh <sup>3</sup>	SF
TECH TALENT WAGE	\$83,117	\$125,438
SUPPORT SALARY	\$51,563	\$72,118
OFFICE RENT	\$22.02 ft <sup>2</sup>	\$62.73 ft <sup>2</sup>
INDUSTRIAL RENT	\$5.68 ft <sup>2</sup>	\$16.18 ft <sup>2</sup>
COST OF LIVING INDEX	0.94	1.57
MEDIAN HOUSE PRICE	\$135K	\$957k

## PITTSBURGH HAS ROOM TO GROW.



## :STRATEGIC SECTORS



### ADVANCED MANUFACTURING

- Electrical equipment
- Industrial machinery
- Nanotechnology
- Precision machining
- Specialty chemistry
- Specialty metals



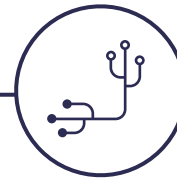
### ENERGY

- \$1B in energy-related R&D funding
- National Energy Technology Lab
- Marcellus Shale Coalition (PA-OH-WV)
- Energy Alliance of Greater Pittsburgh



### FINANCIAL & BUSINESS SERVICES

- Corporate support
- Legal services
- Mortgage servicing
- Transaction processing
- Employing 230,000 people at approximately 15,000 firms



### INFORMATION TECHNOLOGY

- Robotics
- Artificial intelligence
- Cybersecurity
- FinTech
- Machine learning
- Big data



### HEALTH CARE & LIFE SCIENCES

- Medical devices
- Regenerative medicine
- Tissue engineering
- Diagnostics
- Transplants
- More than \$750M spent on academic Life Sciences R&D annually

## SOURCES

<sup>1</sup> CBRE Scoring Tech Talent 2018 (mapping.cbre.com/maps/Scoring-Tech-Talent-2018/Analyzer)

<sup>2</sup> ACCD Market Research, 2018

<sup>3</sup> Pittsburgh Regional Alliance, 2018

**ONE AMERICA WORKS**  
[oneamericaworks.org](http://oneamericaworks.org)

One America Works helps connect innovative companies with cities that can best support their growth. Tell us about your company at [pittsburgh@oneamericaworks.org](mailto:pittsburgh@oneamericaworks.org).