

ONE AMERICA WORKS PITTSBURGH

WORLD-CLASS COMPANIES CHOOSE PITTSBURGH

● **TOP COMPANIES HAVE THOUSANDS OF EMPLOYEES IN PITTSBURGH**

- **TOP COMPUTER SCIENCE PROGRAMS (CARNEGIE MELLON/UNIV. OF PITT)**
- **TOP RESEARCH INVESTMENT: OVER \$2 BILLION IN R&D ANNUALLY²**
- **TOP-RANKED HOSPITALS AND A LEADING HEALTH-CARE ECOSYSTEM**

 **GOOGLE**

 **AMAZON**

 **FACEBOOK**

 **MICROSOFT**

 **UBER**

 **ARGO AI**

**“ONE OF THE MOST
POWERFUL INNOVATION
ECOSYSTEMS IN THE WORLD.”**

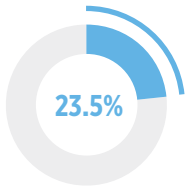
—BRUCE KATZ, BROOKINGS INSTITUTION

:TOP-TIER TALENT

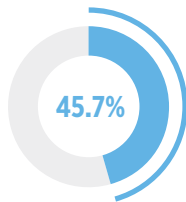
#1 Metro for College Graduates

—Trulia + LinkedIn

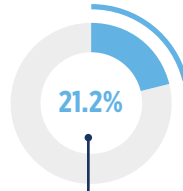
Pittsburgh's pool of young, educated professionals is growing. **Our metro area has the second-most computer science graduates²** and the average tech salary is 21% less than the national average.



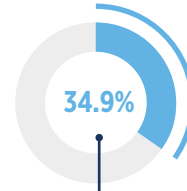
POPULATION CONCENTRATION OF MILLENNIALS¹
(2016)



EDUCATION ATTAINMENT RATE¹



TECH TALENT LABOR POOL GROWTH¹
(2012-2017)



TECH DEGREE GROWTH¹
(2011-2016)

\$83.1K AVERAGE TECH TALENT SALARY¹

\$51.6K AVERAGE SUPPORT (NON-TECH) SALARY¹

44.3K TECH TALENT TOTAL¹

4.4K TECH DEGREE COMPLETIONS¹
(2016)

45,000+ STUDENTS GRADUATE FROM 60+ REGIONAL UNIVERSITIES EVERY YEAR.²

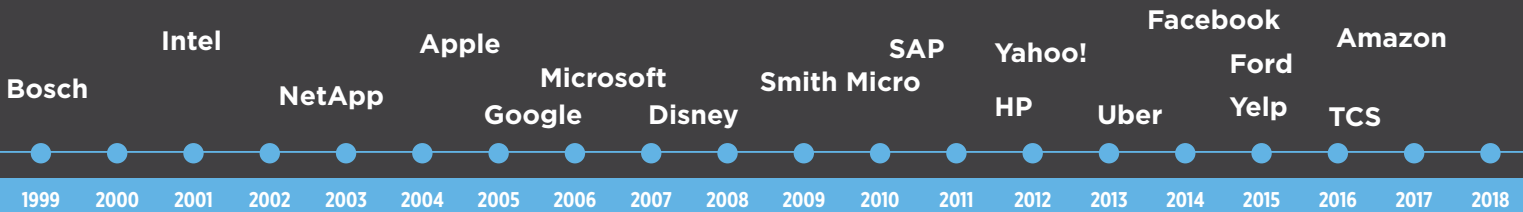
CARNEGIE MELLON: HOME TO THE #1 COMPUTER SCIENCE PROGRAM.²

4,400 ANNUAL TECH GRADUATES, MANY OF WHOM STAY TO ACCESS EMPLOYMENT OPPORTUNITIES AND QUALITY OF LIFE.

:COMPANIES CHOOSE PITTSBURGH

The Best City to Start a Business

—Inc. Magazine



RECENT INVESTMENT



160K SF
500+ employees and 160K SF engineering office in Larimer



22K SF + 125 JOBS
Expansion for web services, machine translation and Alexa



20K SF
Expanded into 20K SF space in the Strip District



20K SF
For its Oculus virtual reality research center



24K SF + 100 JOBS
Acquired Avere Systems focusing on cloud-based high-performance computing



ATC
R&D hub for driverless car technology—partnered with Carnegie Mellon



\$72M + 242 JOBS
Expanding into a new, 122K SF, five-story facility on North Shore



200K SF HQ
Regional HQ for 1,250 employees in East Liberty



52K SF
Expanded Advanced Technology Center in the Strip District



\$32M + 50 JOBS
New Center for Additive Technology Advancement for development & training



\$1B
Invested in Pittsburgh startup Argo AI for autonomous vehicle R&D



600 JOBS
600 permanent jobs with completed petrochemical complex

PITTSBURGH IS HEADQUARTERS TO 13 FORTUNE 1000 COMPANIES.

\$8.7 BILLION TOTAL INBOUND M&A OF PITTSBURGH COMPANIES 2008-2017.

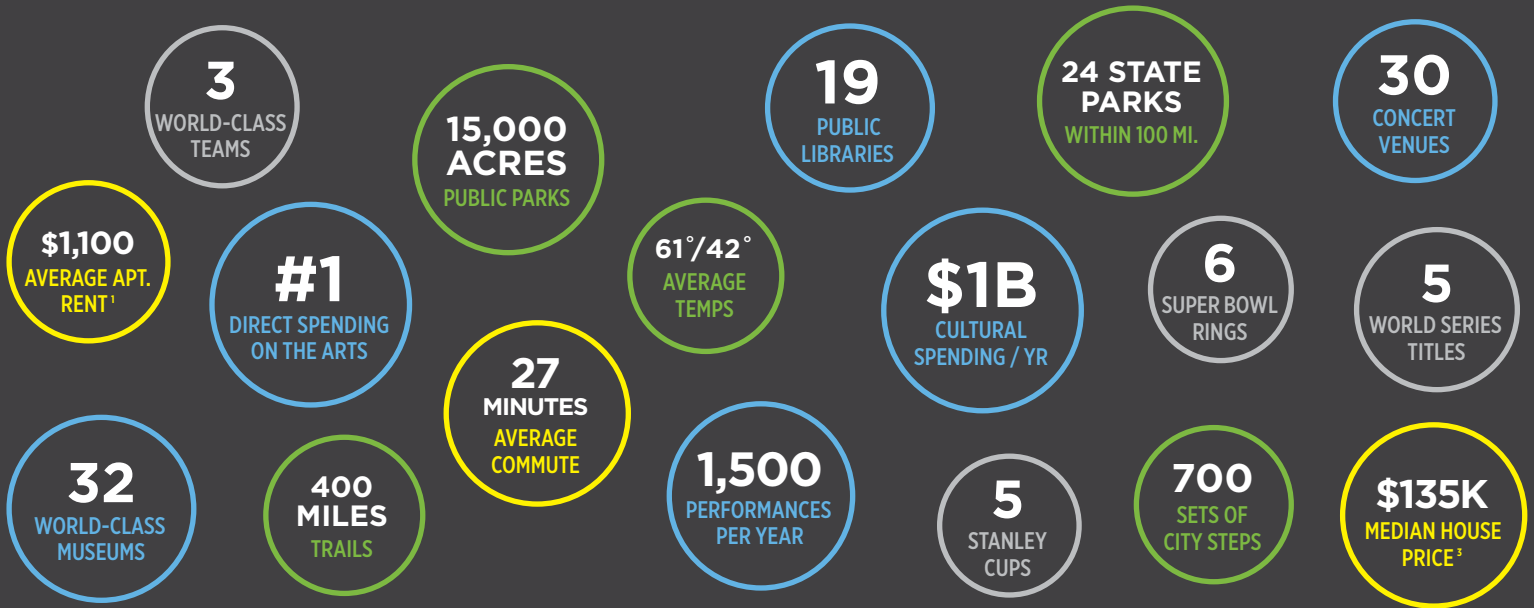
MORE THAN 350 OF THE WORLD'S MOST INNOVATIVE COMPANIES HAVE PARTNERED WITH CARNEGIE MELLON.

QUALITY OF LIFE

Pittsburgh has a legacy of investment in parks, trails, libraries, museums, venues, programs and infrastructure.

- OUTDOORS
- SPORTS
- CULTURE
- OTHER

#2 Most Livable City
—TribLIVE



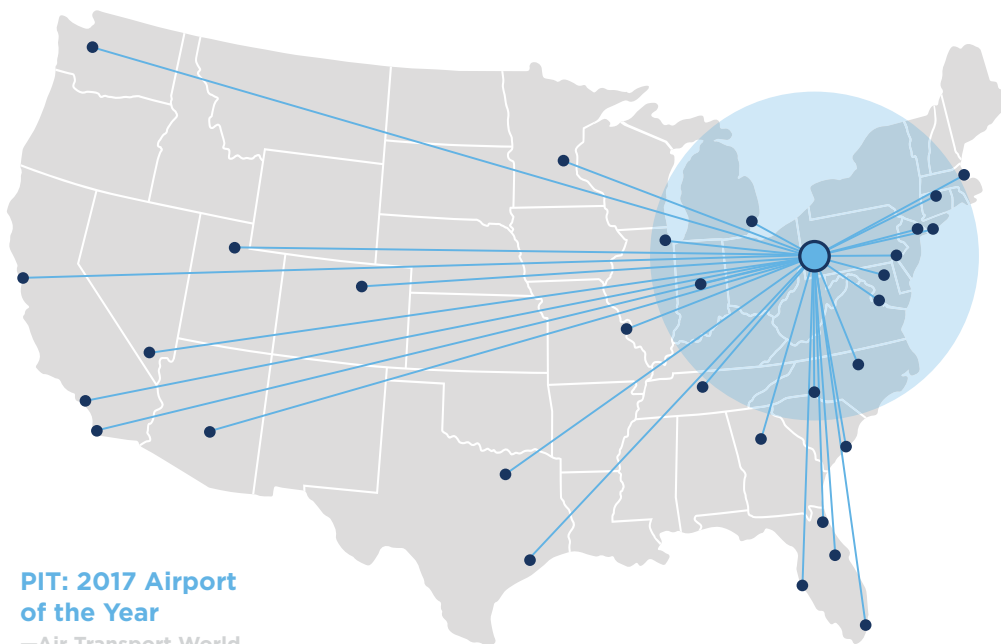
CONNECTION

Accessible and strategic with a strong physical infrastructure: Pittsburgh is a smart destination for businesses.

PITTSBURGH IS WITHIN 500 MI. OF 48% OF U.S. BUSINESSES.²

74 DIRECT FLIGHTS WITH MORE ADDED EVERY YEAR.

1.5 HOURS OR LESS TO N.Y., CHICAGO, D.C. AND BOSTON.



PIT: 2017 Airport of the Year
—Air Transport World

Nonstop Destination	Duration
ATLANTA	1 hr 40 min
BALTIMORE	1 hr
BOSTON	1 hr 30 min
CHARLESTON	1 hr 30 min
CHARLOTTE	1 hr 30 min
CHICAGO	1 hr 30 min
DALLAS	3 hrs
DENVER	3 hrs 30 min
DETROIT	1 hr 15 min
HOUSTON	3 hrs
LAS VEGAS	4 hrs 30 min
LOS ANGELES	5 hrs 15 min
MIAMI	2 hrs 45 min
MINNEAPOLIS	2 hrs 15 min
NASHVILLE	1 hr 30 min
NEW YORK	1 hr 30 min
NEWARK	1 hr 30 min
ORLANDO	2 hrs 15 min
PHILADELPHIA	1 hr 15 min
PHOENIX	4 hrs 30 min
RALEIGH	1 hr 30 min
SAN FRANCISCO	5 hrs 30 min
SEATTLE	5 hrs 30 min
ST. LOUIS	1 hr 40 min
TORONTO	1 hr
WASHINGTON D.C.	1 hr

:PITTSBURGH IS WORLD-CLASS

REGIONAL
UNIVERSITIES²
60+

COLLEGE DEGREES
AWARDED ANNUALLY²
45,000+

STARTUP
INVESTMENT 2017
\$687M

GROSS DOMESTIC
PRODUCT 2017
\$139B

R&D INVESTMENT
UNIVERSITY² CORPORATE & GOV²
\$1B+ \$2B+

...AND AFFORDABLE

One of the Most Affordable Places to Live in the U.S.
—U.S. News & World Report

Averages 2Q 2018 ³	Pittsburgh	U.S.
AVERAGE SALARY	\$53,918	\$55,375
AVERAGE OFFICE RENT	\$22.02 / SF	\$32.43 / SF
INDUSTRIAL RENT	\$5.68 / SF	\$7.01 / SF
COST OF LIVING INDEX	98.4	100.0
MEDIAN HOUSE PRICE	\$135K	\$252K

PITTSBURGH HAS ROOM TO GROW.

650K

BUILT CAPACITY

300K

CURRENT POPULATION

:STRATEGIC SECTORS



ADVANCED MANUFACTURING

- Electrical equipment
- Industrial machinery
- Nanotechnology
- Precision machining
- Specialty chemistry
- Specialty metals



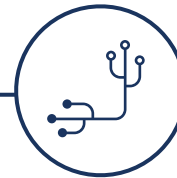
ENERGY

- \$1B in energy-related R&D funding
- National Energy Technology Lab
- Marcellus Shale Coalition (PA-OH-WV)
- Energy Alliance of Greater Pittsburgh



FINANCIAL & BUSINESS SERVICES

- Corporate support
- Legal services
- Mortgage servicing
- Transaction processing
- Employing 230,000 people at approximately 15,000 firms



INFORMATION TECHNOLOGY

- Robotics
- Artificial intelligence
- Cybersecurity
- FinTech
- Machine learning
- Big data



HEALTH CARE & LIFE SCIENCES

- Medical devices
- Regenerative medicine
- Tissue engineering
- Diagnostics
- Transplants
- More than \$750M spent on academic Life Sciences R&D annually

SOURCES

¹ CBRE Scoring Tech Talent 2018 (mapping.cbre.com/maps/Scoring-Tech-Talent-2018/Analyzer)

² ACCD Market Research, 2018

³ Pittsburgh Regional Alliance, 2018

ONE AMERICA WORKS
oneamericaworks.org

One America Works helps connect innovative companies with cities that can best support their growth. Tell us about your company at pittsburgh@oneamericaworks.org.